

# Unequal Neighborhoods: Fresno

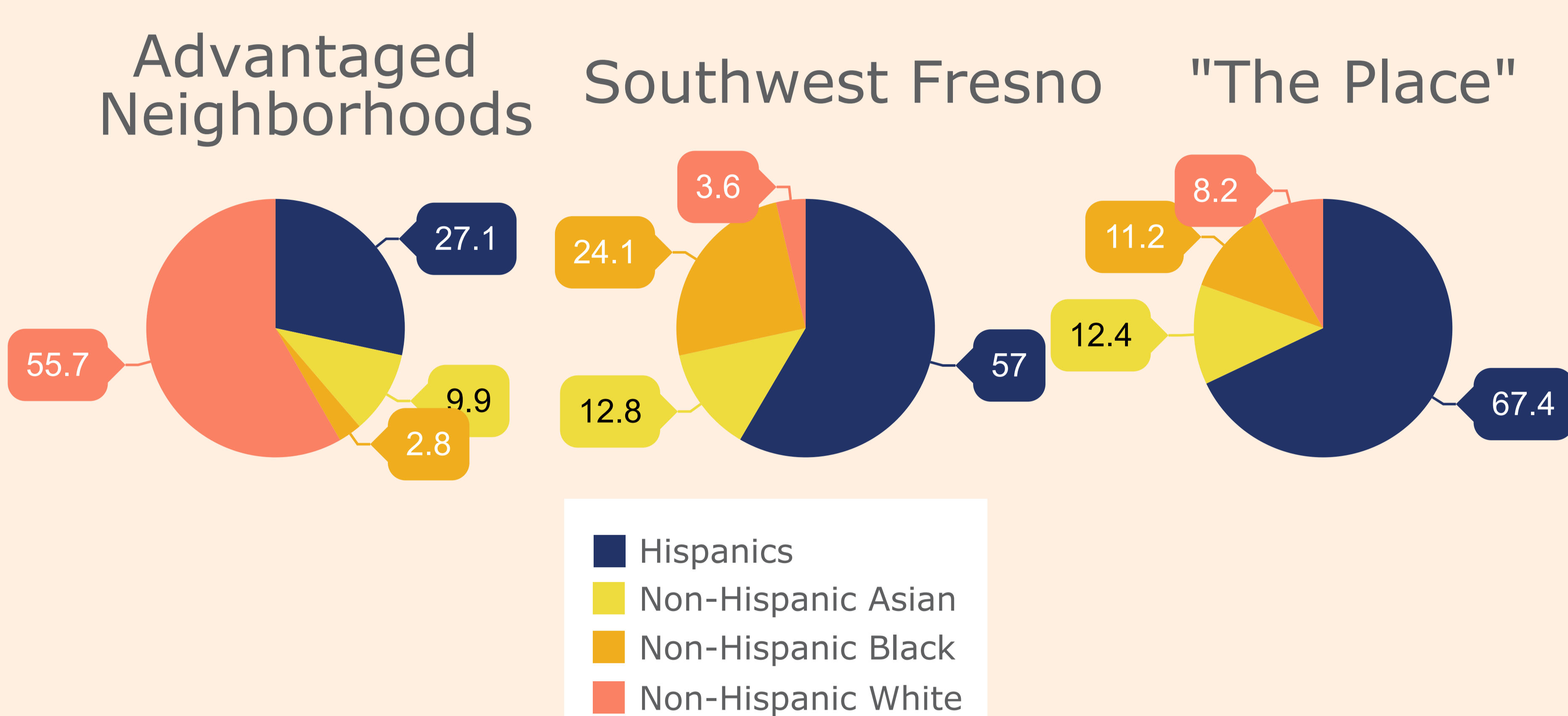
Your Zip Code Matters, Because Where You Live Impacts How You Live

Health outcomes are different across the historically segregated communities in Fresno. As segregation became outlawed, we see other factors that have contributed to the segregation we see today. This segregation has an impact in the health and longevity of a neighborhood.

## Demographics

### ETHNICITY

Fresno is very diverse, but compared to Advantaged Neighborhoods, Southwest Fresno and "The Place" have poorer health outcomes.



In the late 1970s, Fresno County, especially the city of Fresno, experienced a major influx of Southeast Asian refugees. As this took place, whites moved from southern and central Fresno to north Fresno and Clovis. Another shift in white population from south and central Fresno to the north also occurred in the 1990s. According to the 2000 census, many southern and central Fresno populations were either mixed minorities or predominately Latino.

### AGE BREAKDOWN

- Under 18 Years
- Over 65 years

#### Advantaged Neighborhoods

23.6%

15%

#### Southwest Fresno

35.1%

8.3%

#### "The Place"

33.0%

7.5%

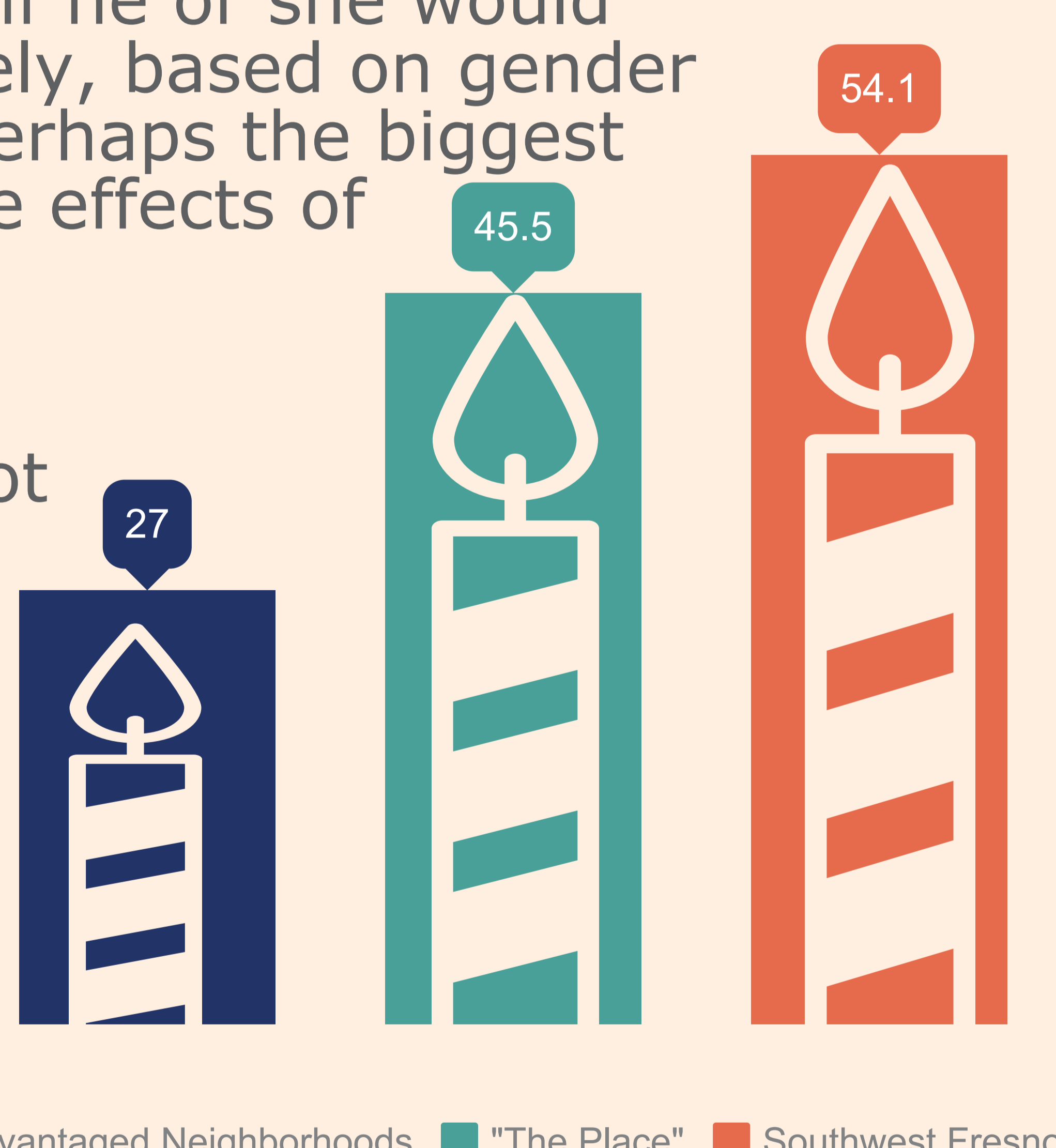
The ratio of minors to elders for both Southwest Fresno and "The Place" is high compared to Advantaged Neighborhoods.



### YEARS OF LIFE LOST

Years of life lost are how many more years a person could have lived if he or she would have not died prematurely, based on gender life expectancy. This is perhaps the biggest display of the cumulative effects of inequality.

Over time, neighbors in Southwest Fresno will not see each other age, and the trauma of premature death has ripple effects on families and their communities.



Advantaged Neighborhoods "The Place" Southwest Fresno

#### Sources

Mason, B., Alvarado, A., & Palacio, R. (1996). *Fresno in Transition: Urban Impacts of Rural Migration*. Julian Samora Research Institute, Michigan State University.

UC Davis Center for Regional Change. (2014). *Regional opportunity index* [Data file]. Available from Center for Regional Change Website: <http://interact.regionalchange.ucdavis.edu/roi/data.html>

#### Contact Information:

Tania Pacheco-Werner, PhD  
Central Valley Health Policy Institute  
tpacheco@csufresno.edu  
cvhpi.org

#### Suggested Citation

Pacheco-Werner, T. L., Corona, K., Corona, G., Chan, S., Conley, A., & Dhillon, H. (2018). *Unequal Neighborhoods: Demographics*. Central Valley Health Policy Institute. California State University, Fresno.

This report series was made possible by a grant from The California Endowment.

