

Equity & Air Pollution



Jenny Saklar

Environmental Justice —

*all people have the right to a clean,
healthy environment.*

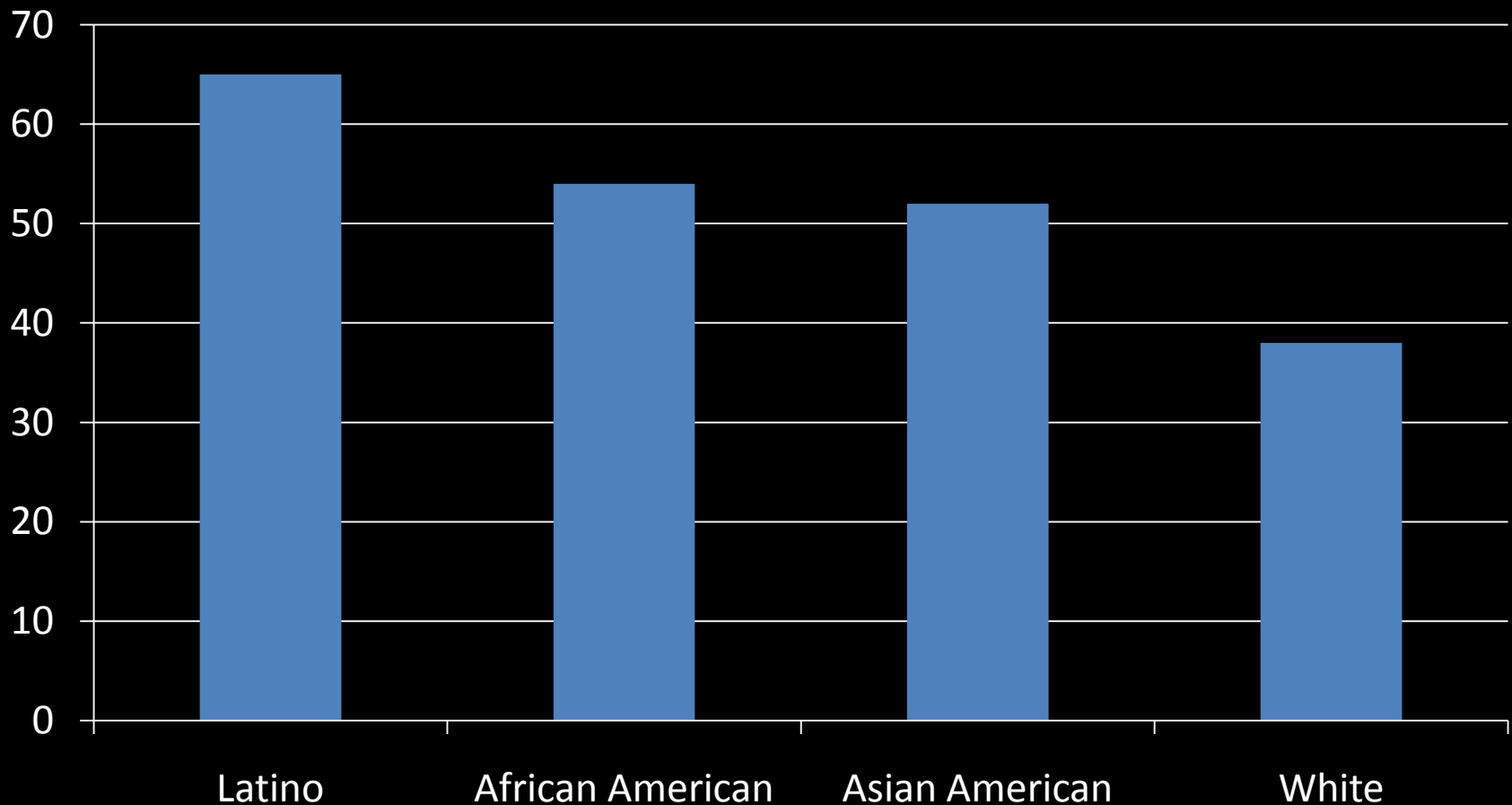
**Racial &
Socioeconomic
Disparities**

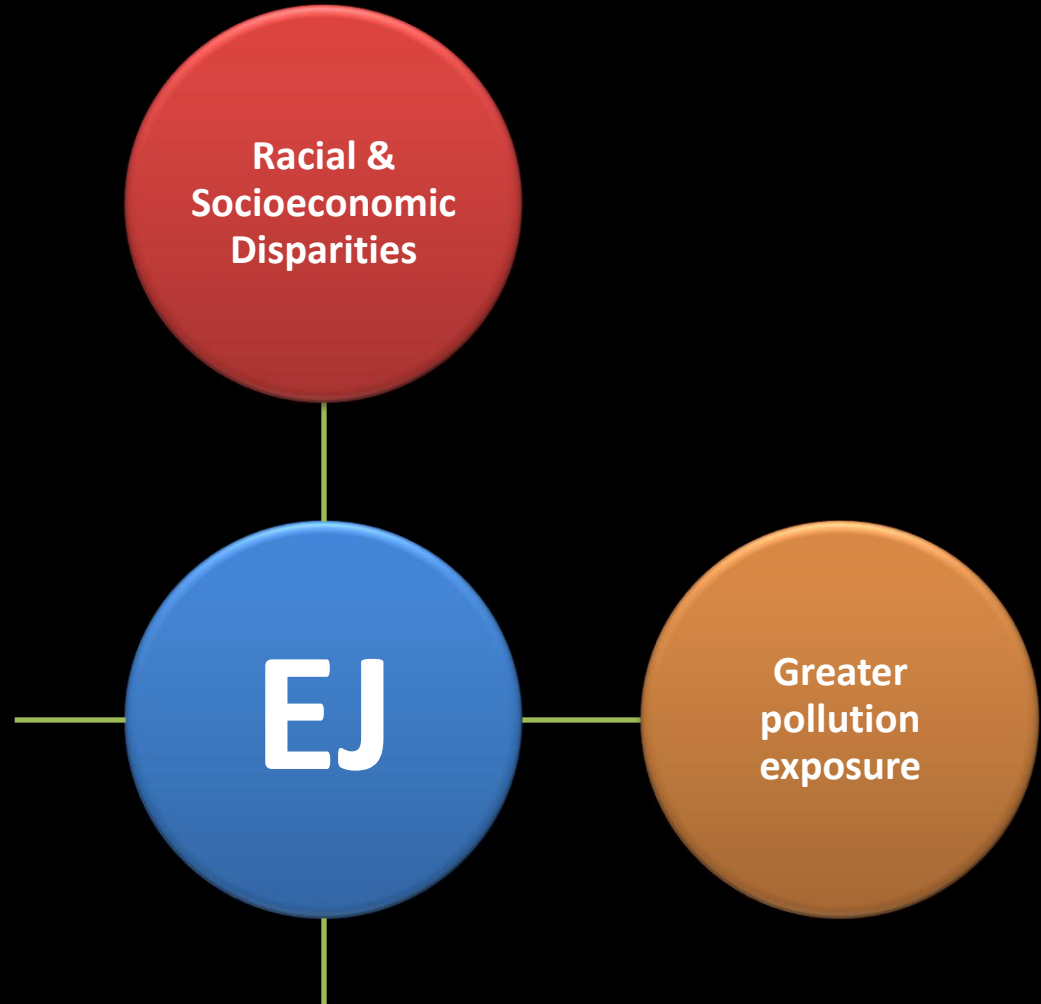
```
graph TD; A((Racial & Socioeconomic Disparities)) --- B((EJ)); B --- C[ ]; B --- D[ ]; B --- E[ ]
```

The diagram features a central blue circle with the white text "EJ". Above it is a red circle containing the text "Racial & Socioeconomic Disparities". A vertical yellow line connects the bottom of the red circle to the top of the blue circle. Three additional yellow lines extend horizontally and vertically from the sides of the blue circle, forming a cross shape.

EJ

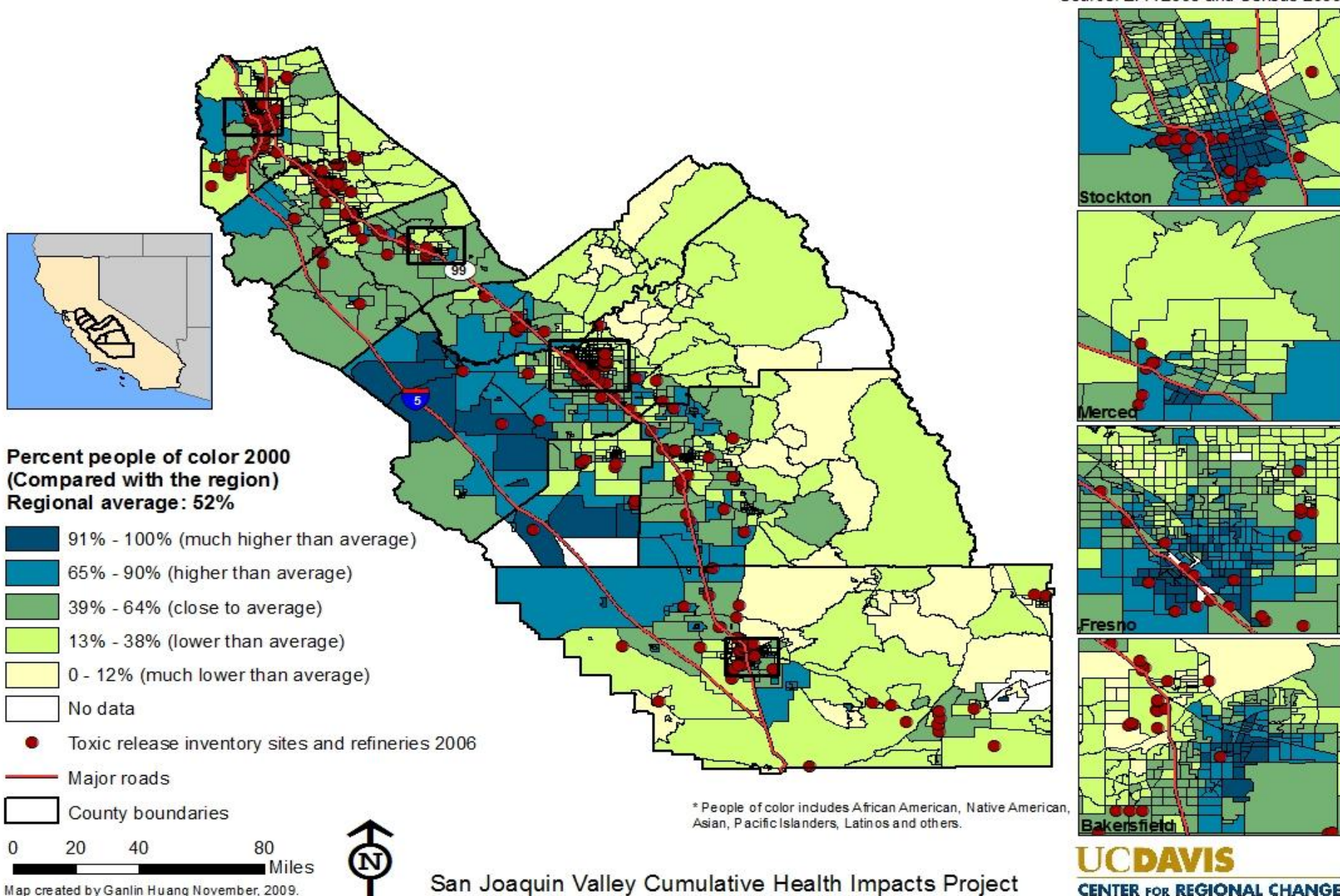
Percent that considers air pollution a very serious or somewhat serious health threat (2009, PPIC)

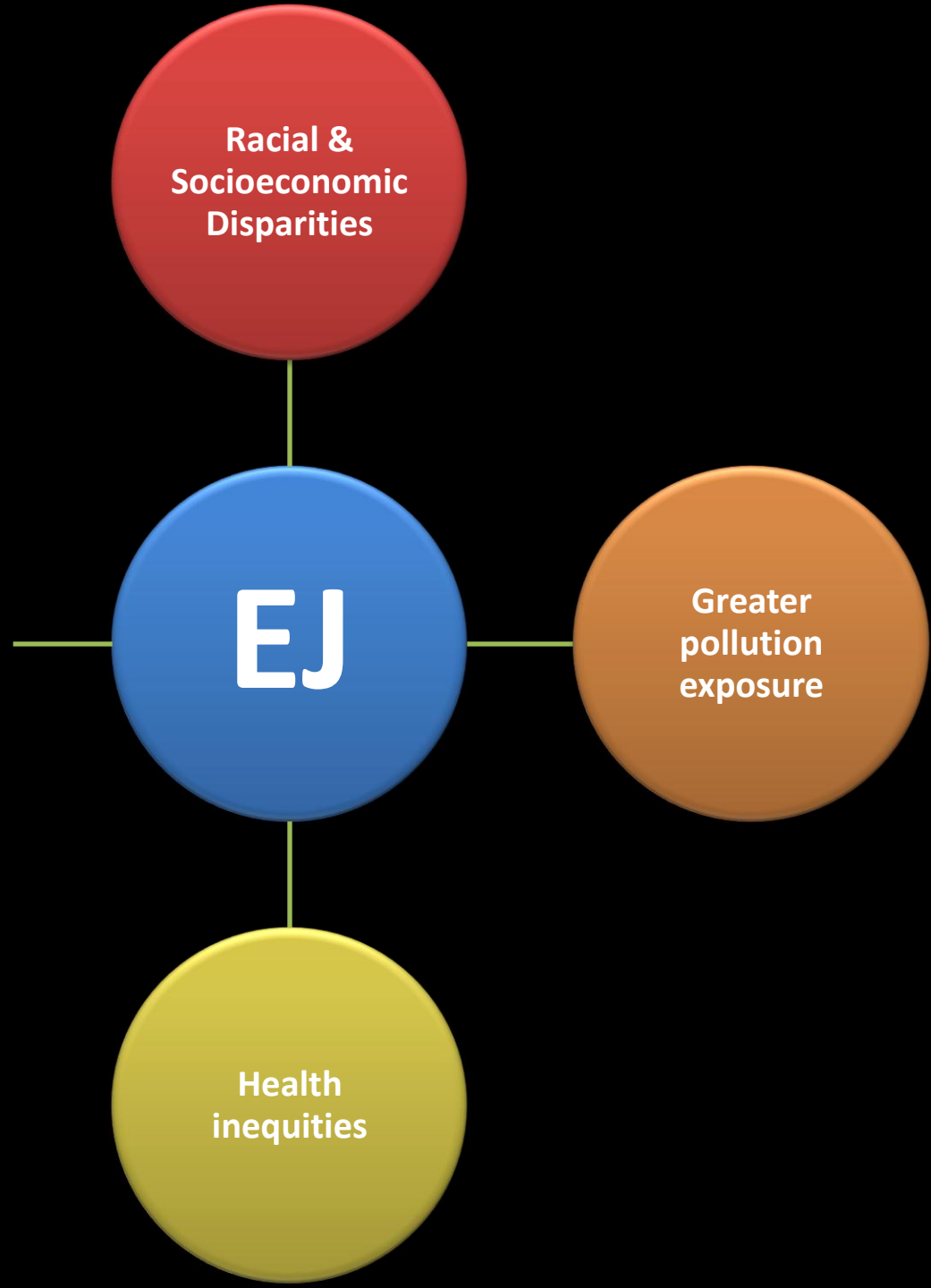




San Joaquin Valley: Locations of Toxic Release Inventory Sites and Refineries Relative to Percent People of Color by Census Block Group

Source: EPA 2006 and Census 2000.

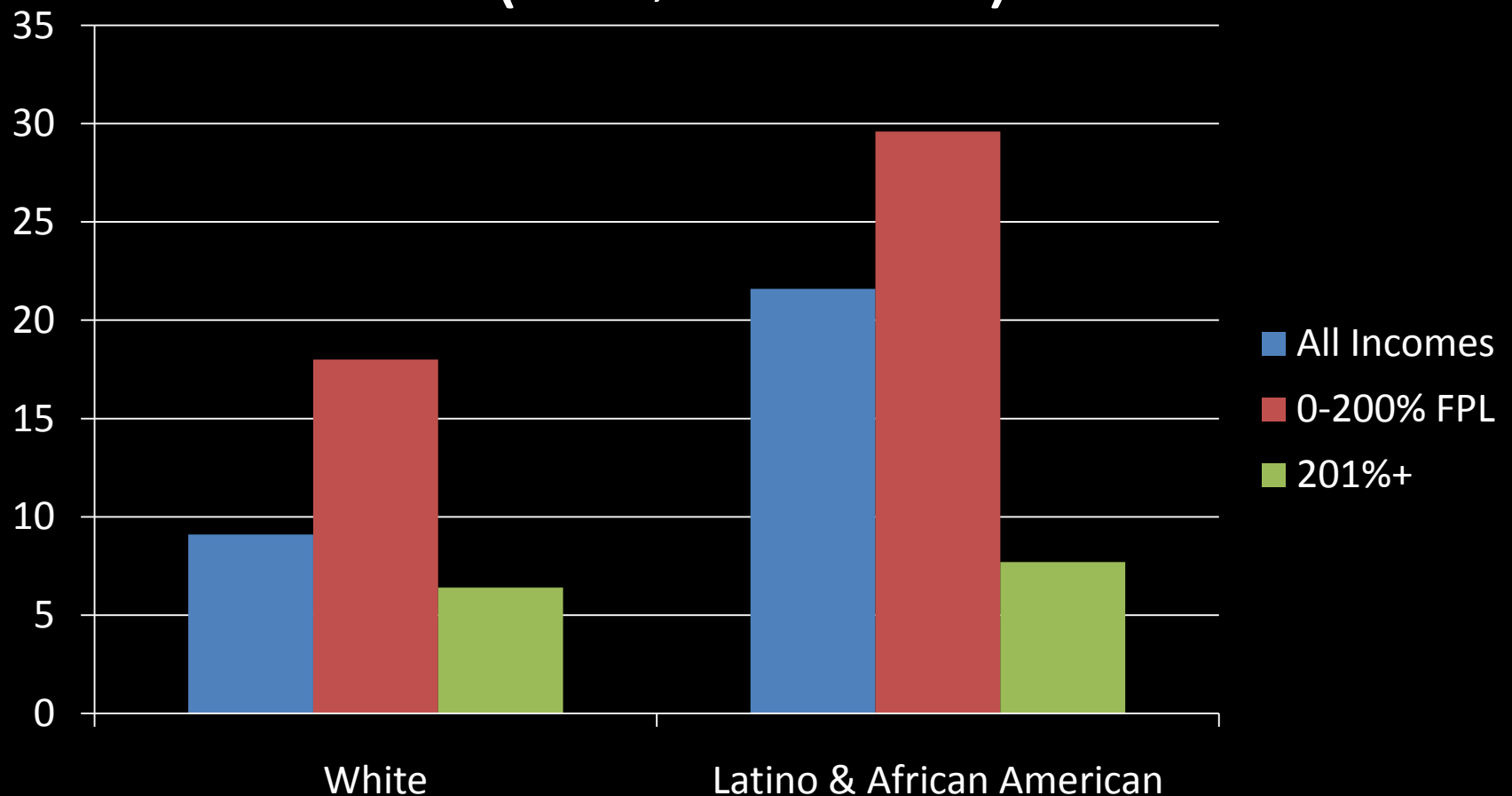


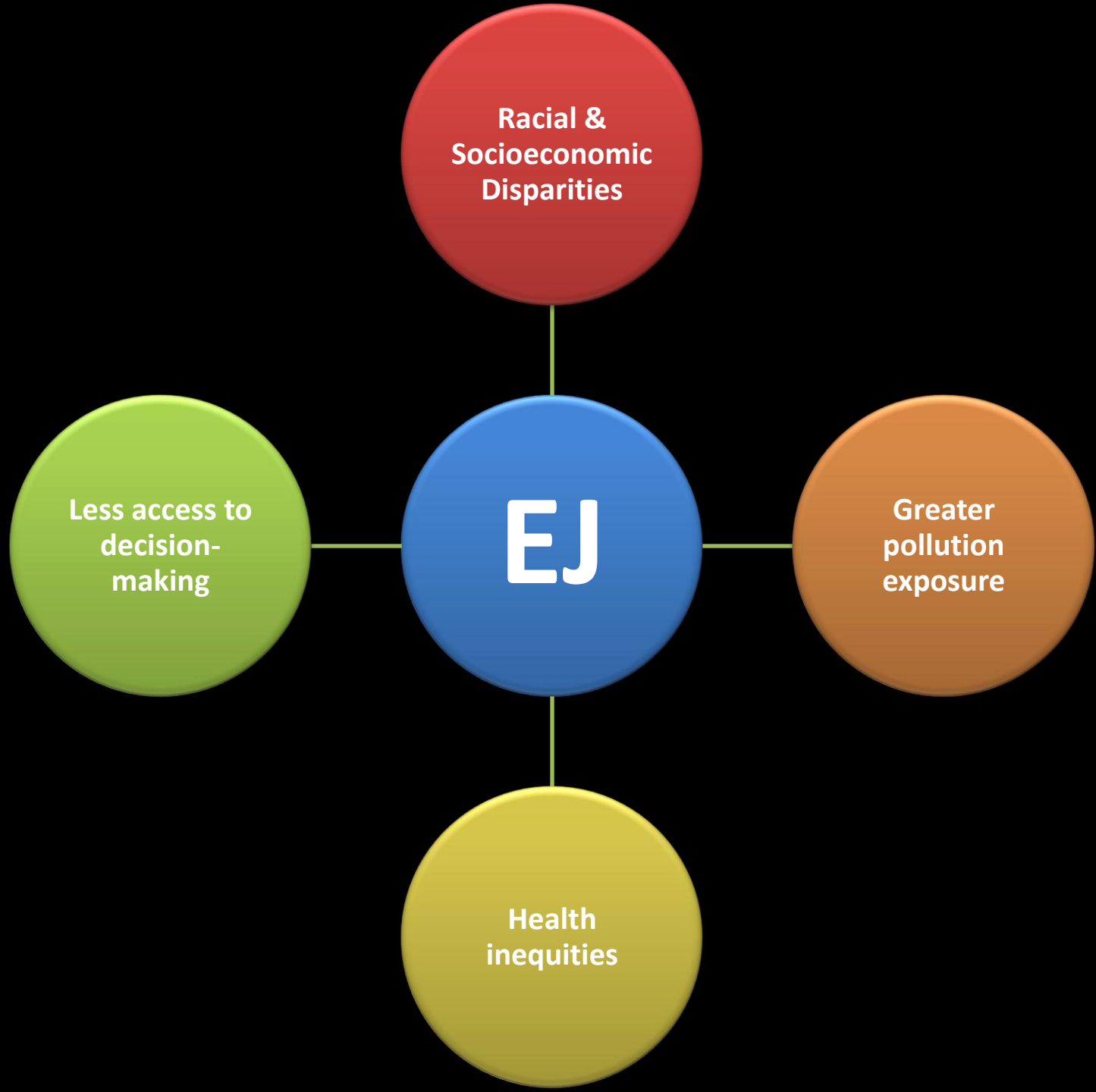


IT ONLY HURTS
WHEN I
BREATHE...



Percent asthmatics having visited urgent care/ER for asthma in the last 12 months (2007, CHIS: UCLA)





Equity & Air Pollution



Jenny Saklar

jenny@calcleanair.org, (559) 442-4771