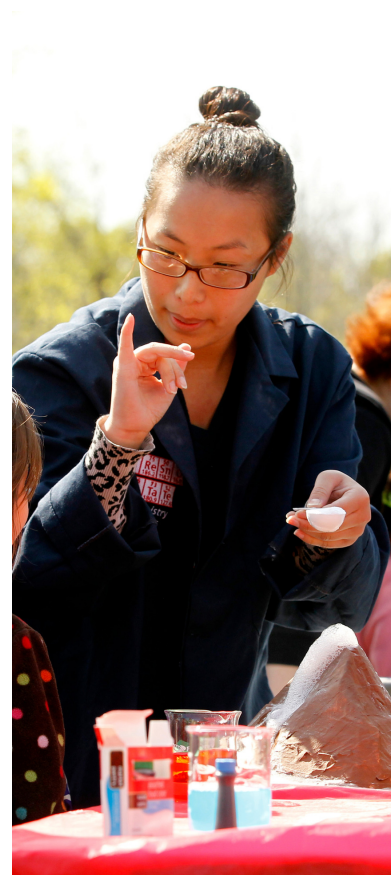


COLLEGE OF HEALTH AND HUMAN SERVICES
FACULTY RESEARCH PROFILES
2019-20



DISCOVERY. DIVERSITY. DISTINCTION.

CHHS MAKING AN IMPACT

92% OF STUDENTS ARE FROM
THE SAN JOAQUIN VALLEY

and alumni continue to serve and
stay in the region after graduation



#1

MOST DEGREES AWARDED
by college at Fresno State

\$16.1 MILLION
IN GRANTS AND CONTRACTS
AWARDED

*"The Central Valley Health Policy Institute
has played a critical role in helping us understand
health issues affecting our communities, with their work leading
to millions in research and healthcare dollars being invested
right here in the Valley." Kevin Hamilton, CEO,
Central California Asthma Collaborative*

RANKINGS

#1 RANKED

**PHYSICAL
THERAPY
PROGRAM**

in the state, based on quality
and affordability. Source:
collegestart.org

#2 RANKED

**RECREATION
ADMINISTRATION
PROGRAM**

for offering best value bachelor's
degree program in parks,
recreation and leisure in the U.S.
Source: CollegeValuesOnline

#2 RANKED

**SCHOOL
OF NURSING
PROGRAM**

according to Nurse Journal's
rankings for America's
Best Nursing Schools Online.

4,358
STUDENTS
ENROLLED

*"I pursued social work as a degree
because I wanted to help people who have
been down the same path as me. Fresno
State gave me that opportunity and
showed me what's truly possible through
education." Arnold Trevino, M.S.W. ('19)*

CHHS students earn

70% OF DOCTORAL
DEGREES
at the University

31,382
SERVICE-LEARNING HOURS
COMPLETED



MESSAGE FROM DEAN



JAMES E. MARSHALL, PH.D.

College of Health and
Human Services

FACULTY

245

16%

representation of
total faculty at
Fresno State

STAFF

30

The College of Health and Human Services is proud to present the **2019-20** edition of its Faculty Research Profiles. With seven academic disciplines and a wide range of centers and institutes, the college continues to **encourage and champion students**, who go on to serve our diverse and growing region as healthcare practitioners, human services professionals, educators, researchers, advocates and leaders.

Our talented faculty incorporate innovative research and high-impact experiences into their teaching, further helping to **build a healthier and more sustainable community** for the children and adults that reside in our Central Valley.

Through these profiles, we hope to encourage **interdisciplinary collaboration** across the University and **engaged partnerships** in the community, which will allow faculty to pave the way for students to connect to service-learning opportunities, internships and community-based research.

While each of our academic disciplines, centers and institutes are unique, we all share a common commitment to **boldly educate and empower our students for success!**

2019-20 Faculty Research Profiles



**Jennifer Adame-Walker, D.P.T.,
P.T., O.C.S., P.M.A.-C.P.T.**

Assistant Professor

Department of Physical Therapy
jadame@csufresno.edu
559.278.1508

Degrees Held:

- D.P.T., Physical Therapy, U.C. San Francisco
- M.S. Physical Therapy, California State University, Fresno
- B.S. Physiology/Minor in Human Movement, U.C. Santa Barbara

Research Interests:

- Concussion baseline testing
- Pilates, health and wellness



**Mark W. Baldis, Ph.D.,
R.C.E.P., P.T.A.**

Lecturer

Department of Kinesiology
mbaldis@csufresno.edu
559.278.8896

Degrees Held:

- Ph.D. Health Promotion and Wellness, Rocky Mountain University of Health Professions
- M.A. Physical Education, California State University, Fresno
- B.A. Special Major: Exercise Science, California State University, Fresno

Research Interests

- Physical activity for the prevention and treatment of chronic diseases
- Prevention and physical rehabilitation of musculoskeletal injury
- Clinical exercise physiology



Irán Barrera, Ph.D.

Professor

Department of Social Work Education/
Gerontology
irbarrera@csufresno.edu
559.278.0398

Degrees Held:

- Ph.D. Social Work, University of Texas at Arlington
- Ph.D. Social Work, La Universidad Autonoma de Nuevo Leon
- M.S.W. Social Work, California State University, Long Beach
- B.A. Psychology, California State University, Long Beach

Research Interests:

- Healthcare disparities
- Latino mental health
- Population health



John Amson Capitman, Ph.D.

*Professor
Director*

Department of Public Health
Central Valley Health Policy Institute
jcapitman@csufresno.edu
559.228.2157

Degrees Held:

- Ph.D. Social Psychology, Duke University
- B.A. Linguistics, Yale University

Research Interests:

- Inequity in health and well-being
- Place, race/ethnicity and public policy
- Financing public health and personal health
- Universal, sustainable and efficient national health policies
- Eldercare policies and programs
- Adolescent development, teen pregnancy prevention, substance abuse prevention



**Cynthia A. Cavazos, Au.D.,
C.C.C./A.**

Lecturer

Department of Communicative
Sciences and Deaf Studies
cynthiac@csufresno.edu
559.278.6967

Degrees Held:

- Au.D. Audiology, Arizona School of Health Sciences
- M.A. Audiology, California State University, Fresno
- B.A. Communicative Sciences and Disorders, California State University, Fresno

Research Interests:

- Pediatric audiology
- Cochlear implants



Neelam Chanda, Ph.D., R.N.

Associate Professor

School of Nursing
neelam@csufresno.edu
559.278.2835

Degrees Held:

- Ph.D. Nursing, U.C. San Francisco
- M.S. Psychiatric Nursing, National Institute of Mental Health and Neurosciences, Deemed University, India
- B.S. Nursing, Bangalore University, India

Research Interests:

- Measuring stress in vulnerable populations
- Therapeutic communication in nurses
- Psychometrics



Michael G. Coles, Ph.D.

Professor

Department of Kinesiology
mcoles@csufresno.edu
559.278.4166

Degrees Held:

- Ph.D. Exercise and Sport Science, University of Utah
- M.A. Exercise Science, California State University, Fresno
- B.A. Special Major: Biology/Physical Education and Human Performance, California State University, Fresno

Research Interests:

- Fitness and wellness
- Applied exercise science: sport specific



Marcus Crawford, Ph.D., M.S.W.

Assistant Professor

Department of Social Work Education/
Gerontology
maruscrawford@csufresno.edu
559.278.6088

Degrees Held:

- Ph.D. Social Work, University of Texas, Arlington
- M.S.W. Social Work, Wichita State University
- B.A. Social Work, Wichita State University
- B.A. Criminal and Social Justice, Ashford University

Research Interests:

- Juvenile justice
- Foster care
- Systems of care
- Under-represented youth



Travis Cronin, Ph.D., L.C.S.W.

Assistant Professor

Department of Social Work Education/
Gerontology
travis@csufresno.edu
559.278.0064

Degrees Held:

- Ph.D. Social Work, Arizona State University, Phoenix
- M.S.W. Social Work, Eastern Washington University, Cheney
- B.S. Sociology, Brigham Young University, Idaho - Rexburg

Research Interests:

- Adolescents
- Black lives
- Child welfare



Nancy A. Delich, Ed.D., M.A.T.S., L.C.S.W., P.P.S.C.

Assistant Professor

Department of Social Work Education/
Gerontology
ndelich@csufresno.edu
559.472.9917

Degrees Held:

- Ed.D. Educational Leadership, Seattle University
- M.A. Transforming Spirituality, Seattle University
- M.S.W. Social Work, San Diego State University
- B.A. Psychology, California State University, Northridge

Research Interests:

- Mental health issues with Deaf and Hard of Hearing communities
- Application of self-efficacy training in group aural rehabilitation with Hard of Hearing adults and their communication partners
- Application of self-efficacy training in school social work
- Social work and spirituality



Donna DeRoo, A.B.D., M.P.A.

Assistant Director

Central California Center for
Health and Human Services
dderoo@csufresno.edu
559.228.2160

Degrees Held:

- A.B.D. Educational Leadership and Change, Fielding Graduate University
- M.P.A. Public Administration, California State University, Dominguez Hills
- B.A. English, California State University, Fresno

Research Interests:

- Grant writing and development
- Project and program development
- Evaluation
- Sustainability
- Quality improvement



Kerry Dunn, J.D., Ph.D., M.S.W.

Assistant Professor

Department of Social Work Education/
Gerontology
kerryd@csufresno.edu
559.278.6805

Degrees Held:

- J.D. Rutgers School of Law, Newark
- Ph.D. Social Welfare and Anthropology, University of Pennsylvania
- M.S.W. Social Work Direct Practice, University of Pennsylvania
- B.A., Liberal Arts, The Evergreen State College

Research Interests:

- Prisons
- Interprofessional education
- Teaching and learning
- Social Workers professional identity
- Participatory research



**Brooke Findley, Ed.D.,
C.C.C.-S.L.P., B.C.B.A.**

Assistant Professor

Department of Communicative
Sciences and Deaf Studies
brfindley@csufresno.edu
559.278.2423

Degrees Held:

- Ed.D. Educational Leadership, California State University, Fresno
- M.A. Educational Leadership and Administration, California State University, Fresno
- M.A. Communicative Disorders and Deaf Studies: Speech-Language Pathology, California State University, Fresno
- B.A. Communicative Disorders and Deaf Studies: Speech-Language Pathology, California State University, Fresno

Research Interests:

- School-based speech-language pathology
- Autism Spectrum Disorder
- Applied Behavior Analysis



David J. Foster, M.S.W., L.C.S.W.

*Lecturer
Director*

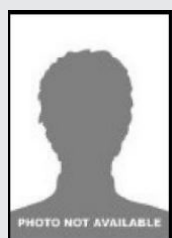
Department of Social Work Education/Gerontology
Central California Social Welfare Evaluation,
Research and Training Center
davidfo@csufresno.edu
559.228.4055

Degrees Held:

- M.S.W. Social Welfare, California State University, Fresno
- B.A. Social Welfare, California State University, Fresno

Research Interests:

- Social welfare policy and policy implementation
- Child welfare
- Administration and organizational change



Don Freed, Ph.D.

Professor

Department of Communicative
Sciences and Deaf Studies
donfr@csufresno.edu
559.278.2029

Degrees Held:

- Ph.D. Speech Pathology, University of Oregon
- M.A. Early Childhood Special Education/Speech Pathology, University of Oregon
- B.A. Speech Pathology, University of Oregon

Research Interests:

- Adult speech and language disorders



Tanisha Garcia, Ph.D.

Assistant Professor

Department of Public Health
tanisha@csufresno.edu
559.278.6125

Degrees Held:

- Ph.D. Health Services, Walden University
- M.S. Healthcare Administration, National American University
- B.S. University Studies Health Sciences, University of New Mexico

Research Interests:

- Change management
- Women's health
- Healthcare technology
- Organizational transformation



Mary A. Garza, Ph.D., MP.H.

Associate Professor

Department of Public Health
magarza@csufresno.edu
559.278.7025

Degrees Held:

- Ph.D. Health Policy and Management: Emphasis in Social and Behavioral Sciences, Johns Hopkins University
- M.P.H. Health Education and Health Promotion, California State University, San Diego
- B.A. Health Science, University of California, San Diego

Research Interests:

- Minority health
- Cancer
- Health disparities
- Intimate partner violence
- Religion/Spirituality and health



Jenelle N. Gilbert, Ph.D., C.C.-A.A.S.P., C.M.P.C.

Professor

Department of Kinesiology
jgilbert@csufresno.edu
559.278.8902

Degrees Held:

- Ph.D. Education: Psychopedagogy, University of Ottawa
- M.A. Human Kinetics, University of Ottawa
- B.Ed. Physical Education, University of Ottawa
- B.P.E. (Hons), Physical Education, University of Ottawa

Research Interests:

- Applied sport psychology
- Sport psychology curriculum development
- Sport team culture



Marie Gilbert, D.N.P., R.N.

Director

Central California Center for
Excellence in Nursing
mgilbert@csufresno.edu
559.228.2155

Degrees Held:

- D.N.P. Doctor of Nursing Practice, California State University Northern California Consortium
- M.A. Education, Fresno Pacific University, Fresno
- B.S. Nursing, The University of Manchester, Royal College of Nursing Institute, London

Research Interests:

- Interprofessional education and collaborative practice
- Patient safety
- Healthcare simulation
- Competency-based education (assessment/evaluation)



Wade Gilbert, Ph.D.

Professor

Department of Kinesiology
wgilbert@csufresno.edu
559.278.5170

Degrees Held:

- Ph.D. Psychopedagogy, University of Ottawa
- M.A. Human Kinetics, University of Ottawa
- Bachelor of Physical Education (Honors), University of Ottawa

Research Interests:

- Talent development
- Youth sports
- High performance sport
- Sport coaching



**Ndidi Griffin-Myers, Ed.D.,
M.S.N., F.N.P., P.H.N., R.N.**

Professor

School of Nursing
ndidig@csufresno.edu
559.278.6697

Degrees Held:

- Ed.D. International-Multicultural Education, University of San Francisco
- M.S.N. Nurse Practitioner/Primary Care, California State University, Fresno
- B.S.N. Nursing, California State University, Stanislaus

Research Interests:

- Psychiatric mental health
- Nurses in higher education
- International-multicultural education



Nupur Hajela, P.T., Ph.D.

Assistant Professor

Department of Physical Therapy
nhajela@csufresno.edu
559.278.1509

Degrees Held:

- T-D.P.T. Physical Therapy/Therapist, Rosalind Franklin University of Medicine and Science
- Ph.D. Rehabilitation Science/Minor in Neuroscience, University of Minnesota-Twin Cities
- B.P.T. Physical Therapy, Baba Farid University of Health Sciences

Research Interests:

- Novel brain stimulation, games and virtual reality for increasing physical activity and inducing neuroplasticity
- Design novel interventions utilizing robotics and technology for physical and cognitive therapy to improve quality of life for survivors of stroke and Parkinson's.



Tim Hamel, M.S.

Lecturer

Department of Kinesiology
thamel@csufresno.edu
559.278.6049

Degrees Held:

- M.S. Kinesiology, California State University, Fullerton
- B.A. Psychology, California State University, Fresno

Research Interests:

- Coach effectiveness
- Performance enhancement
- Stress management



Debra Harris, Ph.D.

Professor

Department of Social Work Education/
Gerontology
dharris@csufresno.edu
559.278.2966

Degrees Held:

- Ph.D. Social Work, University of Texas, Arlington
- M.S.W. Social Work, Our Lady of the Lake University
- B.A. Social Welfare and Psychology, Texas Tech University

Research Interests:

- Education
- Drugs and alcohol
- Program evaluation
- Developmental disabilities



**Cheryl J. Hickey, Ed.D., M.P.T.,
M.S., P.T.**

Associate Professor

Department of Physical Therapy
cherylba@csufresno.edu
559.278.3030

Degrees Held:

- Ed.D. Educational Leadership, U.C. Davis/California State University, Fresno
- M.S. Counseling, California State University, Fresno
- M.P.T. Physical Therapy, California State University, Fresno
- B.S. Physical Therapy, California State University, Fresno

Research Interests:

- Language and cultural barriers in healthcare, emphasis on physical therapy
- Isokinetic norms for the upper extremity
- Inter-professional, international and student/faculty collaboration for public health initiatives



**Jody Hironaka-Juteau, Ed.D.,
C.T.R.S.**

Professor

Department of Recreation Administration
jhironak@csufresno.edu
559.278.2838

Degrees Held:

- Ed.D. Educational Leadership and Change, Fielding Graduate University
- M.A. Education, California State University, Fresno
- B.S. Recreation Administration: Therapeutic Recreation, California State University, Fresno

Research Interests:

- Diversity and inclusion
- Action research
- Interprofessional education and collaboration
- Higher education and leadership



**Catherine G.R. Jackson,
Ph.D., F.A.C.S.M.**

Professor

Department of Kinesiology
cgjack@csufresno.edu
559.278.5166

Degrees Held:

- Ph.D. Exercise Physiology, Anatomy Cognate, University of Colorado, Boulder
- M.A. Chemistry, Montclair State University, New Jersey
- B.A. Chemistry/Physics, Minor: Biology, Montclair State University, N.J.

Research Interests:

- Muscle and space physiology
- Fluids and hydration
- Exercise and sport nutrition
- Aging



Rohan Jadhav, Ph.D., M.P.H.

Assistant Professor

Department of Public Health
rjadhav@csufresno.edu
559.278.6103

Degrees Held:

- Ph.D. Environmental Health: Occupational Health and Toxicology, University of Nebraska Medical Center, Omaha
- M.S. Public Health: Epidemiology, Missouri State University, Springfield
- B.S. Ayurveda Medicine and Surgery, Maharashtra University of Health Science, Mumbai

Research Interests:

- Occupational epidemiology
- Agricultural injury and health
- Environmental health



**Lynn Jakobs, Ph.D., F.N.P.-C.,
R.N.**

Assistant Professor

School of Nursing
ljakobs@csufresno.edu
559.278.2041

Degrees Held:

- Ph.D., Nursing, University of North Dakota, Grand Forks
- M.S.N., Nursing, California State University, Sacramento
- B.S.N., Nursing, California State University, Sacramento
- Family Nurse Practitioner Certification, U.C. Davis

Research Interests:

- Remote-rural healthcare (frontier)
- Rural populations
- Respiratory illnesses in rural farm workers
- Oncology (Thyroid Cancer)



**Dheeshana S. Jayasundara,
Ph.D., M.S.S.W., L.C.S.W.**

Associate Professor

Department of Social Work Education/
Gerontology
djayasundara@csufresno.edu
559.278.6109

Degrees Held:

- Ph.D. Social Work, University of Texas, Arlington
- M.S.W. Social Work, University of Texas, Arlington
- M.A. Criminology and Criminal Justice, University of Missouri, St. Louis
- B.A. Sociology, University of Delhi, India

Research Interests:

- Gender-based and domestic violence
- Reproductive health
- Social development
- International social work (global migration, poverty and war)



Serena Johnson, Ph.D.

Assistant Professor

Department of Communicative
Sciences and Deaf Studies
serenaj@csufresno.edu
559.278.4221

Degrees Held:

- Ph.D. Higher Education, University of North Texas
- M.Ed. ESL and Literacy Education, Southern Methodist University
- B.A. Communication Sciences and Disorders/Deaf Education Track, Baylor University

Research Interests:

- College access and success for d/Deaf students in higher education
- d/Deaf students in community college
- English as a Second Language (ESL) students in higher education



David A. Kinnunen, Ph.D.

Associate Professor

Department of Kinesiology
dkinnunen@csufresno.edu
559.278.7389

Degrees Held:

- Ph.D. Kinesiology, Michigan State University
- M.P.E. Athletic Administration, Idaho State University
- B.A. Secondary Education: Physical Education/History, Idaho State University

Research Interests:

- Human growth and motor development
- Dynamic systems theory
- Human performance and skill acquisition
- Developmental constraints/ Lifespan motor development
- Elementary physical education



Na-hyeon (Hannah) Ko, Ph.D., D.P.T., P.T.

Assistant Professor

Department of Physical Therapy
nahyeonko@csufresno.edu
559.278.4862

Degrees Held:

- D.P.T. Physical Therapy, A.T. Still University
- Ph.D. BioKinesiology, University of Southern California
- M.A. Motor Learning and Control, Columbia University
- B.S. Physical Therapy, Sehan University, South Korea

Research Interests:

- Neuroplasticity and neurorehabilitation in individuals with neurological disorders
- Motor learning and control in pediatric and geriatric populations
- Neuromodulation to facilitate neuroplasticity in the brain
- Sensorimotor control of fine motor tasks



Suzanne Kotkin-Jaszi, Dr.P.H., M.S.P.H.

Professor

Department of Public Health
skotkin@csufresno.edu
559.278.5387

Degrees Held:

- Dr.P.H. Health Policy and Management, University of California, Berkeley
- M.S. Public Health: Health Administration, University of North Carolina, Chapel Hill
- B.S. Conservation of Natural Resources, University of California, Berkeley

Research Interests:

- American Indians and cancer management
- Community health workers (promotores)
- Improving health services delivery to underserved populations
- Health disparities
- Women's health



Jaymin Kwon, Ph.D., M.S.

Associate Professor

Department of Public Health
jkwon@csufresno.edu
559.278.5169

Degrees Held:

- Ph.D. Environmental Sciences, Rutgers, the State University of N.J.
- Ph.D. (joint degree) Exposure Sciences, University of Medicine and Dentistry of New Jersey
- M.S. Environmental Sciences, Rutgers, the State University of N.J.
- M.S. Food Engineering and Biotechnology, Yonsei University, Korea
- B.S. Food Engineering and Biotechnology, Yonsei University, Korea

Research Interests:

- Air pollution exposure assessment
- Air pollution epidemiology
- Impact of air pollution exposure on pregnancy and other health outcomes



Gyanesh Lama, Ph.D.

Associate Professor

Department of Social Work Education/
Gerontology
glama@csufresno.edu
559.278.0397

Degrees Held:

- Ph.D. Social Work, Washington University
- M.S.W. Social Work, Washington University
- B.S.W. Social Work, Kathmandu University

Research Interests:

- Social development, poverty, institutions, the “middle class”
- Geo-spatial mapping (GIS) - mapping poverty, health and social disparities
- Indigenous peoples and self-governance
- Equanimity, universality and diversity



Sam Lankford, Ph.D.

*Professor
Chair*

Department of Recreation Administration
slankford@csufresno.edu
559.278.4004

Degrees Held:

- Ph.D. Leisure Studies and Services: Tourism, University of Oregon
- Master of Urban and Regional Planning, University of Oregon
- M.A. Recreation and Park Administration, California State University, Chico
- B.A. Geography: Community and Regional Planning, California State University, Chico

Research Interests:

- Tourism and recreation impacts on local communities
- Social capital, sustainability, liveable cities and well-being
- Management of recreation services and survey research
- Recreation in isolated environments (islands and the Arctic)



Dawn K. Lewis, Ph.D.

Professor

Department of Kinesiology
dalewis@csufresno.edu
559.278.8517

Degrees Held:

- Ph.D. Kinesiology: Sport and Exercise Psychology, Michigan State University
- M.S. Kinesiology: Sport and Exercise Psychology, Michigan State University
- B.A. Psychology, Hunter College of the City, University of New York

Research Interests:

- Psychology of sport injury and rehabilitation
- Sport and exercise performance enhancement
- P.E. teacher preparation and assessment



Mitzi A. Lowe, Ph.D., M.S.W.

*Associate Dean
Professor*

College of Health and Human Services
Department of Social Work Education/
Gerontology
mlowe@csufresno.edu
559.278.5218

Degrees Held:

- Ph.D. Educational Policy Studies and Evaluation: Emphasis in Higher Education, University of Kentucky
- M.S.W. Social Work, California State University, Fresno
- B.S. Criminology, California State University, Fresno

Research Interests:

- Collaboration
- Mentoring
- Trends in higher education
- Juvenile justice



Michael Mahoney, Ed.D.

Professor

Department of Recreation Administration
mmahoney@csufresno.edu
559.278.5263

Degrees Held:

- Ed.D. Sport and Recreation Administration, Temple University
- M.Ed. Sport Management, Temple University
- B.A. Information and Communication Studies, California State University, Chico

Research Interests:

- Public assembly venue management
- Venue and event accessibility
- Patron and client experience management
- Bookings and economic impact



Christine Maul, Ph.D.

Associate Professor

Department of Communicative
Sciences and Deaf Studies
cmaul@csufresno.edu
559.278.3938

Degrees Held:

- Ph.D. Education, University of California, Santa Barbara
- M.A. Communicative Sciences and Disorders, California State University, Fresno
- B.A. History, California State University, Fresno

Research Interests:

- Child language disorders
- Autism
- Augmentative and alternative communication
- Literacy acquisition
- Multicultural populations



Justine J. McAlpine, M.A.

Lecturer

Department of Kinesiology
jmcaldin@csufresno.edu
559.278.8903

Degrees Held:

- M.A. Adapted Physical Education, Humboldt State University
- B.A. Kinesiology: Athletic Training, San Diego State University

Research Interests:

- Aquatic fitness and older adults
- Fitness assessment in the aquatic environment
- Water safety
- Elementary physical education



John McMillen, Ph.D., J.D.

Professor

Department of Kinesiology
jmcmillen@csufresno.edu
559.278.1123

Degrees Held:

- Ph.D. Educational Administration, University of Nebraska-Lincoln
- M.Ed. Educational Administration, University of Nebraska-Lincoln
- J.D. Drake University Law School
- B.A. Psychology, University of Nebraska-Lincoln

Research Interests:

- Equity and the law
- Sport art law
- Disability access



Shauna Miller, D.N.P., C.N.E. R.N., P.H.N.

Assistant Professor

School of Nursing
shaunam@csufresno.edu
559.278.2041

Degrees Held:

- D.N.P. Nursing Practice, California State University, Northern Consortium
- M.S.N. Clinical Nurse Specialist, California State University, Fresno
- B.S.N. Nursing, University of New York, Regents Program

Research Interests:

- Adults with Autism
- Simulation in health education
- Nursing: law and ethics



Sylvia Miller, Ed.D., R.N., F.N.P.-C.

*Associate Professor
Chair*

School of Nursing
symiller@csufresno.edu
559.278.4788

Degrees Held:

- Ed.D. Curriculum and Program Evaluation, University of San Francisco
- Post-Master's Certificate, Family Nurse Practitioner, California State University, Fresno
- M.A. Education, California State University, Fresno
- M.S.N. Medical Surgical Nursing, California State University, Fresno
- B.S.N. Nursing, California State University, Fresno

Research Interests:

- Palliative care
- End-of-life care and the mentally challenged
- Spirituality and nursing care
- Curriculum development



Helen Miltiades, Ph.D.

Professor

Department of Social Work Education/
Gerontology
hmiltiades@csufresno.edu
559.278.7253

Degrees Held:

- Ph.D. Gerontology, University of Massachusetts, Boston
- M.A. Gerontology, University of Massachusetts, Boston
- B.S. Psychology, Malone University

Research Interests:

- Alzheimer's
- Supportive care
- Access to healthcare



Susan Mirlohi, Ph.D.

Assistant Professor

Department of Public Health
susanmirlohi@csufresno.edu
559.278.7024

Degrees Held:

- Ph.D. Civil Engineering: Environmental and Water Resources Engineering, Virginia Tech
- M.S. Environmental Sciences and Engineering, Virginia Tech
- B.S. Biology/ Chemistry minor, Radford University

Research Interests:

- Environmental health
- Environmental contaminants exposure assessment
- Water quality, health/safety and treatment
- Environmental education/outreach of drinking water



Stephanie D. Moore, Ph.D., A.T.C.

Associate Professor

Department of Kinesiology
stmoore@csufresno.edu
559.278.0255

Degrees Held:

- Ph.D. Rehabilitation Science, University of Kentucky
- M.S. Athletic Training, Illinois State University
- B.S. Athletic Training, University of Central Missouri

Research Interests:

- Prevention and treatment of shoulder injuries
- Orthopedic outcomes
- Manual therapy techniques



Salvador Montana, Ph.D.

Associate Professor

Department of Social Work Education/
Gerontology
smontana@csufresno.edu
559.278.8581

Degrees Held:

- Ph.D. Social Work, University of Texas, Austin
- M.S.W. Social Work, California State University, Fresno
- B.A. Political Science, University of California, Santa Barbara

Research Interests:

- Social welfare policy
- Human services organizations
- Quantitative research methods
- Child welfare policy and practice
- Central California human services issues



Jacobo Morales, Ph.D.

Professor

Department of Kinesiology
jacobom@csufresno.edu
559.278.5168

Degrees Held:

- Ph.D. Exercise Physiology, University of Maryland, College Park
- M.A. Exercise Physiology, University of Maryland, College Park
- B.A. Physical Education, University of Puerto Rico, Mayagüez

Research Interests:

- Exercise efficiency and its association to the surface EMG power spectrum
- Exercise-induced fatigue and changes to the surface EMG power spectrum
- Power-velocity relationships of intact human skeletal muscle during cycle ergometry
- Physiological demands and responses of crossfit performance



**Nisha Nair, D.N.P., R.N.C.,
C.N.S./N.E., C.L.E.C.**

Assistant Professor

School of Nursing
nishanair@csufresno.edu
559.278.8854

Degrees Held:

- D.N.P. California State University, Northern California Consortium
- M.S.N. Nursing, California State University, Fresno
- M.A. Public Administration, University of Kerala, India
- B.S.N. Nursing, University of Kerala, India

Research Interests:

- Women's health
- Parental education
- Improving birth outcomes for women and infants
- Exclusive breastfeeding



**Randall Nedegaard, Ph.D.,
L.C.S.W.**

Associate Professor

Department of Social Work Education/
Gerontology
nedegaard@csufresno.edu
559.278.6129

Degrees Held:

- Ph.D. Department of Medical and Clinical Psychology, Uniformed Services University of the Health Sciences, Bethesda
- M.A. Department of Medical and Clinical Psychology, Uniformed Services University of the Health Sciences, Bethesda
- M.S.W. Social Work, University of Minnesota, Minneapolis
- B.A. Social Work, Bethel University, St. Paul

Research Interests:

- Military mental health and military cultural competence
- Intimate partner violence
- Effective social work education with disadvantaged populations



**Nancy Nisbett, Ed.D.,
C.T.R.S., R.T.C.**

Professor

Department of Recreation Administration
nancyni@csufresno.edu
559.278.7886

Degrees Held:

- Ed.D. Educational Leadership, University of California, Davis/
California State University, Fresno
- M.A. Therapeutic Recreation, Central Michigan University
- B.A. Communication, Michigan State University

Research Interests:

- Inclusive recreation
- Youth development
- Pedagogy
- Accessible tourism



Paul W. Ogden, Ph.D.

Professor Emeritus

Department of Communicative
Sciences and Deaf Studies
paulo@csufresno.edu

Degrees Held:

- Ph.D. Educational Psychology, University of Illinois at Urbana
- M.A. Educational Psychology, University of Illinois at Urbana
- B.A. Mathematics and Computers, Antioch College

Research Interests:

- Parent education
- Education of deaf and hard of hearing children
- Fundraising and development



**Miguel A. Perez, Ph.D.,
M.C.H.E.S.**

Professor

Department of Public Health
mperez@csufresno.edu
559.278.2897

Degrees Held:

- Ph.D. Health Education, Pennsylvania State University
- M.S. Health Education, Pennsylvania State University
- B.A. Research in Mental Health, California State University, Dominguez Hills

Research Interests:

- Global health
- Adolescent health
- Cultural competence
- Health literacy



**Helda Pinzon-Perez, Ph.D.,
M.P.H., M.S., R.N., F.N.P., C.N.S.**

Professor

Department of Public Health
hpinzonp@csufresno.edu
559.278.5329

Degrees Held:

- Ph.D. Health Education, Pennsylvania State University
- M.S.N. Nursing, California State University, Fresno
- M.P.H. Public Health, California State University, Fresno
- M.S. Health Sciences, California State University, Fresno
- B.S.N. Nursing, Pontificia Universidad Javeriana

Research Interests:

- Minority health
- Alternative medicine and integrative health
- Global health
- Indigenous/Native health



**Frances Pomaville, Ph.D.,
C.C.C.-S.L.P.**

Associate Professor

Department of Communicative
Sciences and Deaf Studies
fpomavil@csufresno.edu
559.278.2732

Degrees Held:

- Ph.D. Human Services, Capella University, Minneapolis
- M.A. Speech-Language Pathology, California State University, Fresno
- B.A. Communicative Disorders and Deaf Studies, California State University, Fresno

Research Interests:

- Treatment for individuals with Parkinson's Disease
- Treatment for individuals with traumatic brain injury
- Assessment and treatment of voice disorders



Mohammad A. Rahman, Ph.D.

Professor

Department of Public Health
mrahman@csufresno.edu
559.278.4222

Degrees Held:

- Ph.D. Health Policy, Brandeis University
- M.S.P. Social Policy, Brandeis University
- M.S.S. Economics, University of Dhaka
- B.S.S. Economics (Honors), University of Dhaka

Research Interests:

- Health economics
- Economic evaluation and cost effectiveness analysis
- Tele-health and telemedicine



**Kathleen Rindahl, D.N.P.,
F.N.P.-C**

Associate Professor

School of Nursing
krindahl@csufresno.edu
559.278.3491

Degrees Held:

- D.N.P. Nursing Practice, Western University of Health Sciences
- M.S.N. Nurse Practitioner/Primary Care, California State University, Fresno
- B.S.N. Nursing, California State University, Los Angeles

Research Interests:

- Eating disorders and school-age children
- Rural health and health disparities
- Cultural diversity in healthcare



**Monica Rivera, P.T., D.P.T.Sc.,
M.S.**

Assistant Professor

Department of Physical Therapy
morivera@csufresno.edu
559.278.2052

Degrees Held:

- D.P.T.Sc. University of California, San Francisco
- M.S. Neurological Physical Therapy, Samuel Merritt College
- Physical Therapy Certificate, UCLA Hospital and Clinics
- B.S. Health Science, California State University, Northridge

Research Interests:

- Infant mobility and spatial cognitive development
- Infant crawling kinematics
- Brain injury and rehabilitation in pediatrics and adults
- Rehabilitation interventions in Parkinson's Disease



Stephen Roberts, Ph.D.

Associate Professor

Department of Communicative
Sciences and Deaf Studies
stroberts@csufresno.edu
559.278.2421

Degrees Held:

- Ph.D. Audiology, Wayne State University
- M.S. Audiology/Rehabilitation Counseling, University of Utah
- B.A. Speech-Language Pathology and Audiology, California State University, Sacramento

Research Interests:

- Self-efficacy training in interprofessional psychosocial group aural rehabilitation
- Self-efficacy training with Deaf and Hard of Hearing students
- Audiologic/Rehabilitation counseling with Deaf and Hard of Hearing communities



Jennifer Roos, P.T., D.P.T., G.C.S.

Assistant Professor

Department of Physical Therapy
jroos@csufresno.edu
559.278.4063

Degrees Held:

- D.P.T. California State University, Fresno/ U.C. San Francisco Joint Doctoral program
- M.P.T. Physical Therapy, California State University, Fresno
- B.S. Exercise Science, California State University, Fresno

Research Interests:

- Peer mentoring
- Gait analysis in adults with chronic conditions
- Aquatics



Scott R. Sailor, Ed.D., A.T.C.

*Professor
Chair*

Department of Kinesiology
ssailor@csufresno.edu
559.278.2543

Degrees Held:

- Ed.D. Educational Leadership, California State University, Fresno/ University of California, Davis
- M.S. Exercise and Sports Sciences: Athletic Training, University of Arizona
- B.S. Special Major: Athletic Training, California State University, Fresno

Research Interests:

- Clinical education
- Interprofessional education
- Concussion (sport related, MTBI)
- Youth sports injuries



Janice Sanders, R.N., D.N.P.

Assistant Professor

School of Nursing
janices@csufresno.edu
559.278.2429

Degrees Held:

- D.N.P. Nursing Practice, California State University, Northern Consortium
- M.S.N. Pediatric Nurse Practitioner, California State University, Fresno
- B.S.N. Nursing, Clemson University

Research Interests:

- Mental health
- Autism in school age children
- Recruitment and retention of minorities in nursing
- Optimal healing environments



Caio Sarmento, Ph.D., P.T.

Assistant Professor

Department of Physical Therapy
caio@csufresno.edu
559.278.2065

Degrees Held:

- Ph.D. Rehabilitation Science, University of Kansas Medical Center
- M.S. Cardiopulmonary Physiotherapy, University of Gama Filho, Brazil
- B.S. Physiotherapy, University of Paulista, Brazil

Research Interests:

- Chronic pain
- Rheumatology
- Opioid use disorder
- Exercise immunology



Jenna Sawdon-Bea, Ph.D., P.T.

*Associate Professor
Chair*

Department of Physical Therapy
jsbea@csufresno.edu
559.278.6376

Degrees Held:

- Ph.D. Physical Therapy, Texas Woman's University
- M.P.T. Physical Therapy, California State University, Fresno
- B.S. Physical Therapy, California State University, Fresno

Research Interests:

- Osteoporosis management
- Shoulder injuries
- Knee and ankle injuries
- Running injuries and prevention
- Orthopedic assessment
- Peer mentoring for DPT student success



Kammi Yap Sayaseng, D.N.P., R.N., P.N.P.-B.C., I.B.C.L.C.

Associate Professor

School of Nursing
ksayaseng@csufresno.edu
559.278.6678

Degrees Held:

- D.N.P. Health Leadership Systems, University of San Francisco
- M.S.N. Pediatric Nurse Practitioner /School Nurse Credential, California State University, Fresno
- B.S.N. Nursing, California State University, Fresno

Research Interests:

- General pediatric health issues
- Pediatric dermatological disorders
- Childhood obesity
- Breastfeeding in minority low-income women



Sujatha Shanmugasundaram, Ph.D., M.S.N., R.M., G.C.T.E.

Associate Professor

School of Nursing
sujathas@csufresno.edu
559.278.2106

Degrees Held:

- Ph.D. Palliative Care Nursing, Monash University, Melbourne
- M.S.N. Nursing, Sri Ramachandra Medical College and Research Institute, India
- B.S. Nursing, MGR University, India

Research Interests:

- Palliative care
- Dementia
- Caregiver burden
- Simulation
- Cultural issues



Roger Simpson, Ph.D., M.S.W., M.A.

Associate Professor

Department of Social Work Education/
Gerontology
rsimpson@csufresno.edu
559.278.5385

Degrees Held:

- Ph.D. (Dual) Social Work and Sociology, University of Michigan
- M.S.W. Social Work, University of Michigan
- M.A. Sociology, University of Michigan
- B.A. Sociology, Whittier College

Research Interests:

- Cultural diversity
- Healthcare disparities
- Spirituality and social support
- Social work education



Bhupinder Singh, Ph.D., P.T.

Associate Professor

Department of Physical Therapy
bhsingh@csufresno.edu
559.278.2625

Degrees Held:

- Ph.D. Physical Therapy and Rehabilitation Sciences, University of Iowa
- B.S. Physical Therapy, Guru Nanak Dev University, India

Research Interests:

- Childhood obesity
- Gait analysis
- Exercise prescription
- Biomechanics
- Orthopedics



**Steven L. Skelton, Ph.D.,
C.C.C.-S.L.P.**

*Professor
Chair*

Department of Communicative
Sciences and Deaf Studies
sskelton@csufresno.edu
559.278.2698

Degrees Held:

- Ph.D. Speech and Hearing Sciences, University of California, Santa Barbara
- M.A. Communicative Disorders: Speech-Language Pathology, California State University, Fresno
- B.A. Psychology/Liberal Studies, California State University, Bakersfield

Research Interests:

- Treatment of speech sound disorders in children
- Motor learning applied to speech pathology
- Research methods



Nicole J. Smith, Ph.D.

Assistant Professor

Department of Kinesiology
njsmith@csufresno.edu
559.278.2069

Degrees Held:

- Ph.D. Sports Education Leadership, University of Nevada, Las Vegas
- M.S. Sports Education Leadership, University of Nevada, Las Vegas
- B.S. Physical Education, University of Nevada, Reno

Research Interests:

- Physical activity measurement
- Environment and policy influences on physical activity
- Evidence-based physical education programs
- Physical activity interventions
- Physical education teacher effectiveness



**Janice Smith-Warshaw, Ed.D.,
A.S.C. II**

Assistant Professor

Department of Communicative
Sciences and Deaf Studies
jsmithwarshaw@csufresno.edu
559.387.5303

Degrees Held:

- Ed.D. Leadership for Educational Justice, University of Redlands
- Ed.S. Change Leadership in Deaf Education, Gallaudet University
- M.S. Deaf Education, McDaniel College
- B.S. Management Science, University of South Carolina

Research Interests:

- A.S.L./English bilingual education
- Education of Deaf and hard of hearing children
- Social and educational justice
- Change leadership
- Organizational change



Brandon Taylor, D.M., M.A.

Assistant Professor

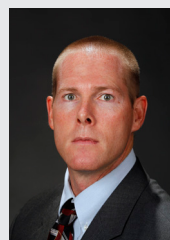
Department of Recreation Administration
brtaylor@csufresno.edu
559.278.2315

Degrees Held:

- D.M. Organizational Leadership, University of Phoenix
- M.A. Kinesiology, Fresno Pacific University
- B.S. Recreation Administration, California State University, Fresno

Research Interests:

- Perceptions of government funded recreational services
- Management of municipal leisure services
- Organizational development and leadership
- Leisure education



Greg Thatcher, Ph.D., M.S.P.H.

Associate Professor

Department of Public Health
gthatcher@csufresno.edu
559.278.8807

Degrees Held:

- Ph.D. Health Promotion and Behavior, University of South Carolina
- M.S.P.H. Health Promotion and Behavior, University of South Carolina
- B.A. Sociology, Bowling Green State University

Research Interests:

- Adolescent and young adult health
- After-school initiatives
- Alcohol and other drug reduction



Martha Vungkhanching, Ph.D.

*Professor
Chair*

Department of Social Work Education/
Gerontology
marthavu@csufresno.edu
559.278.8741

Degrees Held:

- Ph.D. Social Work and Social Administration, The University of Hong Kong
- M.A. Social Work, Tata Institute of Social Sciences
- B.A. (Hons) Sociology, St. Mary's College

Research Interests:

- Substance abuse
- Traumatic brain injury
- Psychosocial assessment and support for cancer patients
- International social work



Deborah L. Walker, D.P.T., P.T., O.C.S., G.C.S.

Assistant Professor

Department of Physical Therapy
dewalker@csufresno.edu
559.278.0491

Degrees Held:

- D.P.T. Physical Therapy, Regis University
- M.P.T. Physical Therapy, University of Southern California
- B.A. Psychology, California State University, Long Beach

Research Interests:

- Local delivery of interdisciplinary healthcare
- Sarcopenia
- Fall prevention
- Healthy aging
- Age friendly cities



Jason Whiting, Ph.D.

Associate Professor

Department of Recreation Administration
jawhiting@csufresno.edu
559.278.8749

Degrees Held:

- Ph.D. Natural Resources, Recreation and Tourism, University of Georgia
- M.S. Recreation, Park, and Tourism Administration, Western Illinois University
- B.S. Recreation, Western State College of Colorado

Research Interests:

- Outdoor recreation participation
- Human dimensions in natural resource management
- Diversity in parks and recreation



Kara Zografos, Dr.P.H., M.P.H.

*Professor
Chair*

Department of Public Health
kzografos@csufresno.edu
559.278.5988

Degrees Held:

- Dr.P.H. Health Education, Loma Linda University
- M.P.H. Health Promotion, California State University, Fresno
- B.S. Health Science, California State University, Fresno

Research Interests:

- Asthma and air quality
- Religion and health

DEGREES AND CERTIFICATES

DOCTORAL DEGREES

- Doctor of Nursing Practice (D.N.P.)
- Doctor of Physical Therapy (D.P.T.)

MASTER'S OPTIONS AND DEGREES

- Deaf Education (M.A.)
- Speech-Language Pathology (M.A.)
- Master of Social Work (M.S.W.)
- Exercise Science (M.S.)
- Kinesiology (M.S.)
- Sport Administration (M.S.)
- Sport Psychology (M.S.)
- Primary Care/Nurse Practitioner (M.S.N.)
- Health Promotion (M.P.H.)

BACHELOR'S OPTIONS AND DEGREES

- Audiology (B.A.)
- Deaf Education (B.A.)
- Interpreting (B.A.)
- Speech-Language Pathology (B.A.)
- Social Work (B.A.)
- Athletic Training (B.S.)
- Exercise Science (B.S.)
- Physical Education (B.S.)
- Sport Psychology (B.S.)
- Nursing (B.S.N.)
- Community Health (B.S.)
- Environmental/Occupational Safety and Health (B.S.)
- Health Administration (B.S.)
- Community Recreation and Youth Services (B.S.)
- Outdoor Recreation and Natural Resource Management (B.S.)
- Recreation Therapy (B.S.)
- Special Events and Tourism (B.S.)
- Sports and Entertainment Facility Management (B.S.)

CERTIFICATES

- Conversational American Sign Language
- Alcohol and Drug Services
- Adventure-Based Programming
- Serving At-Risk Youth
- Special Event Planning
- Sports and Entertainment Facility Management
- Cross-Cultural Competency
- Gerontology

ACADEMIC PROGRAMS AND CENTERS

DEPARTMENTS AND SCHOOLS

- Department of Communicative Sciences and Deaf Studies
- Department of Kinesiology
- Department of Physical Therapy
- Department of Public Health
- Department of Recreation Administration
- Department of Social Work Education and Gerontology
- School of Nursing

CENTERS, INSTITUTES AND RESEARCH CENTERS

The Central California Center for Health and Human Services supports the:

Central California Center for Excellence in Nursing

The center takes a regionally and comprehensively-focused approach, working in partnership with health care providers to develop nursing specialists, leaders and educators needed to serve our diverse region.

Central California Children's Institute

Its mission is to promote research, policies and practices that support the well-being of children and families, using a regional children's agenda as the guiding framework.

Central California Sports Science Institute

Through community awareness and education, as well as collaborative research, the institute is helping those in the field focus on enhancing performance of athletes while maintaining a safe atmosphere.

Central Valley Health Policy Institute

The institute facilitates regional research, leadership training and graduate education programs to address emerging health policy issues that influence the health status of people living in Central California.

Social Welfare Evaluation, Research and Training Center

The center studies the human condition, social issues and the delivery of human services in Central California to improve the quality of life for residents in the region.

DEAN'S COUNCIL OF AMBASSADORS 2019-20

This unique council of community leaders in our region work collaboratively to review the critical issues facing our students and offer insight, as well as assist in connecting regional resources with the college's academic programs, centers and areas of study.

Lynne Ashbeck, Senior Vice President of Community Engagement and Population Wellness,
Valley Children's Healthcare

Connie Clendenan, Former CEO, Valley Teen Ranch (retired)

Ben Cuellar, Dean Emeritus, College of Health and Human Services, Fresno State

Donna DeRoo, Director, Central California Center for Health and Human Services, Fresno State

Ivonne Der Torosian, Director of Community Benefit and Outreach, Saint Agnes Medical Center

Patrick Galindo, Student Representative, College of Health and Human Services, Fresno State

Margaret Jackson, Director, Cultural Brokers, Inc.

Lynne Jarman, Manager of Rehabilitation Therapy, Community Medical Centers

Karen Kimura, Vice President, Kasco Fab, Inc.

Sam Lankford, Chair and Professor, Department of Recreation Administration, Fresno State

Richard Lembo, Director of Sports Medicine, Sierra Pacific Orthopedic

Mitzi Lowe, Associate Dean, College of Health and Human Services, Fresno State

James Marshall, Interim Dean, College of Health and Human Services, Fresno State

Stephen Ramirez, CEO, California Health Collaborative

Jim Santos, Communications Professor, College of Humanities and Sciences, University
of Phoenix

Denise Vermeltfoort, Director of Regulatory and Clinical Practice, Valley Children's Healthcare

Kara Zografos, Chair and Associate Professor, Department of Public Health, Fresno State

HONORS PROGRAM IN COLLABORATIVE LEADERSHIP



Developed to create a collaborative academic program between departments, students in the Honors Program work together and with community partners on real-world, interdisciplinary projects that strive to provide healthy outcomes for the Fresno community.

"The Honors Program was a wonderful opportunity to learn about conducting research and working together with students from other professional fields, all of which will better prepare us to serve others as future health and human service professionals." - Shannon Muzio, B.A., Communicative Sciences and Deaf Studies ('19)



2345 E. San Ramon M/S MH26
Fresno, CA 93740-8031
559.278.4004

fresnostate.edu/chhs (website)
fresnostatechhs.com (blog)

