

2022 CONFERENCE Scarlett's Park

Virtual presentation on "Deaf and Hard of Hearing Children with CHARGE Syndrome"

September 23, 2022
September 24, 2022



TEXAS
Health and Human
Services

[Register Now](#)

This activity has been awarded (0.8) CEUs in the area of Professional Studies by The Registry of Interpreters for the Deaf, Inc. at the "Some" Content Knowledge Level for CMP and ACET Participants. CEUs will also be awarded for those certified through the Board for Evaluation of Interpreters and Generic CEUs awarded through Fresno State. Partial CEUs will not be awarded.



Keynote: Dr. Kasee Stratton-Gadke

Dr. Stratton-Gadke, an associate professor of School Psychology at Mississippi State University, directs one of two labs worldwide advancing education, behavior, and quality of life outcomes for individuals with CHARGE. As an internationally recognized scholar in CHARGE, she has presented in the United States, Australia, New Zealand, and Denmark.

"Understanding CHARGE Syndrome and Recent Research Findings"

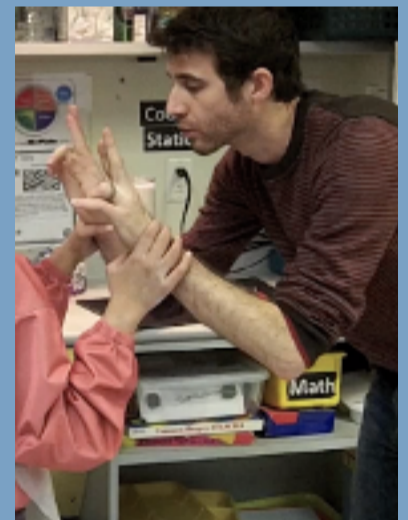
Serving students and individuals with CHARGE can be complex, yet as professionals, it can also be one of the most unique learning opportunities we have in our careers. This presentation will introduce CHARGE, its medical complexities, learning challenges, and behaviors. Research driven recommendations to better serve individuals with CHARGE will be provided.

Christopher Russell, TVI

Chris Russell is the Project Coordinator for the New York Deaf-Blind Collaborative, and has experience as a classroom teacher and Teacher of Visually Impaired (TVI) working with children who have visual impairments and deaf-blindness. He holds a Master's Degree in Educational Leadership, and is adjunct faculty at Hunter College, CUNY.

"Availability for Learning and the CHARGE Syndrome Experience"

Individuals with CHARGE Syndrome often have difficulty in achieving or maintaining availability for learning due to a combination of internal and external influences, including a variety of biophysical and environmental factors. This session provides an overview of the unique impacts of CHARGE Syndrome on availability for learning, and an updated approach to student-centered assessment and intervention.



Susanne Morgan Morrow, MA, CI/CT

Susanne Morgan Morrow, MA, CI, CT is the Project Director of the New York Deaf-Blind Collaborative, a federally funded grant for DeafBlind children and young adults in New York. Susie's career started within the DeafBlind adult community at Helen Keller National Center, over 25 years ago. She is also a nationally certified Sign Language Interpreter and interpreter educator where she has provided service on the local, regional, national and international levels.

"Communication Needs & Modifications to Sign Language for Learners with CHARGE"

Individuals with CHARGE Syndrome have a very broad range of communication representations, ranging from emerging communication skills to formalized language. Some individuals use spoken language, some use sign language and others use object symbols for communication. This presentation will address some common communication supports for optimal receptive and expressive communication.





Panel of Parents of Children/Young Adults with CHARGE Syndrome

Moderated By: Penni Echols

Mom to Martha (7) and her five sisters in Las Vegas, NV. Board Member at CHARGE Syndrome Foundation. ASTra Advocate at Nevada Hands & Voices.



Mother of 5 year old Isla, who has CHARGE syndrome, and Elena, her 9 year old sister.

Yessica Elliot



Father of 2 from Huntsville, AL. Both myself and my oldest son (3) have CHARGE. In addition, computer scientist, coffee lover, ultramarathoner, Toastmaster, and much more!

Matthew Jones



The Norman Clan lives in Santa Cruz, CA. Our spunky daughter, Jette, is 9 years old. I work as a school psychologist/licensed educational psychologist supporting learners from birth to college.

Darlene Norman



Panel of Young Adults with CHARGE Syndrome

Moderated By: Susanne Morgan Morrow

Project Director of the New York Deaf-Blind Collaborative, a federally funded grant for DeafBlind children and young adults in New York. She is also a nationally certified Sign Language Interpreter and interpreter educator where she has provided service on the local, regional, national and international levels.



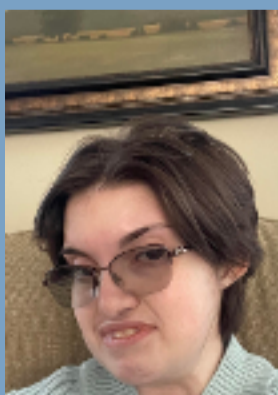
Shannon Boelter

Shannon is 32 years old is a native of Minnesota. She grew up attending the Minnesota School for the Deaf and communicates with America Sign Language (ASL). She is a graduate of Gallaudet University with a degree in Family Child Studies. She now works at the same school supporting students with special needs. Shannon is a role model as an adult with CHARGE Syndrome.



Meri Dwyer

Meri, who is 29 years old is from Long Island, NY where she lives with her family. Meri has attended community college and is an avid storywriter. Meri enjoys speaking publicly about CHARGE Syndrome.



Aubrey Williams

Aubrey is a 23-year-old with CHARGE from Kansas City, Missouri who recently graduated from Mississippi State University with a degree in psychology. She is a member of the Bulldog CHARGE Syndrome Research Lab and was a Secondary Clinician in the Autism and Developmental Disabilities Clinic. She is passionate about making a difference in the lives of others with disabilities and is currently working as a Data Entry Operator with Quest Diagnostics.



Philip Wismer

Philip is 34 years old and currently lives in the Washington, DC area where he attends Gallaudet University for the past 3 years, studying Communication Studies. He will be a senior this upcoming fall semester. Philip currently works for Gallaudet Technology Services. Philip has spoken at several CHARGE Syndrome conferences over the years.

Conference Schedule (Pacific Standard Time)

Friday, September 23, 2022

4:00 pm – 4:15 pm

Welcome Speeches by Dean Denise Seabert of College of Health and Human Services

Founder of The Silent Garden, Paul W. Ogden

4:15 pm – 6:15 pm

Keynote: Dr. Kasee Stratton-Gadke

“Understanding CHARGE Syndrome & Recent Research Findings”

Saturday, September 24, 2022

9:00 am – 9:10 am

Introductions: Paul W. Ogden

9:10 am – 11:15 am

“Availability for Learning and the CHARGE Syndrome Experience”

Speaker: Christopher Russell, TVI

11:15 am – 11:30 am

Break

11:30 am – 11:35 pm

Introductions: Paul W. Ogden

11:35 am – 12:35 pm

Panel: Parents of Children/Young Adults with CHARGE Syndrome

Moderator: Penni Echols

12:35 am – 1:15 pm

Break

1:15 pm – 3:00 pm

“Communication Needs & Modifications to Sign Language for Learners with CHARGE Syndrome”

Speaker: Susanne Morgan Morrow, MA, CI/CT

3:00 pm- 3:15 pm Break

3:15 pm – 4:15 pm

Panel: Adults with CHARGE Syndrome

Moderator: Susanne Morgan Morrow

4:15 pm – 4:30 pm

Closing Ceremony: Paul W. Ogden

September 23, 2022
September 24, 2022



Register Now

This activity has been awarded (0.8) CEUs in the area of Professional Studies by The Registry of Interpreters for the Deaf, Inc. at the "Some" Content Knowledge Level for CMP and ACET Participants. CEUs will also be awarded for those certified through the Board for Evaluation of Interpreters and Generic CEUs awarded through Fresno State. Partial CEUs will not be awarded.